

Canadian Data Report of  
Fisheries and Aquatic Sciences 958

1995

EFFECT OF LOWERED TEMPERATURE ON GROWTH OF JUVENILE NECHAKO RIVER  
CHINOOK SALMON (*Oncorhynchus tshawytscha*) AT THREE RATION LEVELS

by

John E. Shelbourn<sup>1</sup>, W. Craig Clarke<sup>1</sup> and C. D. Levings<sup>2</sup>

<sup>1</sup>Department of Fisheries and Oceans  
Pacific Biological Station  
Nanaimo, BC.  
V9R 5K6

<sup>2</sup>Department of Fisheries and Oceans  
West Vancouver Laboratory  
4160 Marine Drive  
West Vancouver, BC  
V7V 1N6

## ABSTRACT

Shelbourn, John E., W. Craig Clarke and C. D. Levings. 1995.  
Effect of lowered temperature on growth of juvenile Nechako  
River chinook salmon (*Oncorhynchus tshawytscha*) at three  
ration levels. Can. Data Rep. Fish. Aquat. Sci. 958:21p.

This report contains data on the growth performance of wild chinook salmon fry taken from the Nechako River, B.C. on 26 April, 1994. Fish were taken to a laboratory and fed a commercial diet to measured satiation, or a calculated 80 or 60% of satiation. Water temperature simulated the daily ambient river temperature, or ambient with a decrease to 15, 12.5 or 10°C for 30 days. Photoperiod was set daily to that at the river site. The experiment was terminated on 29 September. Full data tables of sample means of growth measurement are presented, with a calculation of feed conversion and ration. Figures illustrate experimental design and the results.

key words: chinook salmon, Nechako, temperature, ration, growth.

## RÉSUMÉ

Shelbourn, John E., W. Craig Clarke and C. D. Levings. 1995.  
Effet de l'abaissement de la température sur la croissance  
de jeunes saumons quinnat (*Oncorhynchus tshawytscha*) de la  
rivière Nechako étudié pour trois différentes rations  
alimentaires. Can. Data Rep. Fish. Aquat. Sci. 958:21p.

Ce rapport présente les données obtenues en 1994 sur la performance de croissance de jeunes saumons quinnat sauvages, prises le 26 avril de la rivière Nechako, C.B. Les poissons transférés au laboratoire ont été nourris d'un aliment commercial à satiété ou à 60 ou 80% de la satiété. La température de l'eau a été ajustée à la température journalière de la rivière ou abaissée de 10, 12.5 ou 15°C et ce pendant 30 jours. La photopériode a été ajustée quotidiennement à celle du site étudié de la rivière. L'expérience a été terminée le 29 septembre. Les tableaux présentent les valeurs moyennes des mesures de croissance des différents échantillons ainsi que les calculs sur la transformation de la nourriture et la valeur de la ration. Les figures présentent les protocoles expérimentaux et les résultats.

mots-clés: saumons quinnat, Nechako, température, ration, croissance.

Photoperiod was set daily to simulate daylight  $\pm$  civil twilight at the river (latitude 54°N, longitude 125°W: data courtesy Chris Aikman, DAO, NRC Canada, Saanich, BC. V8X 4M5).

After arrival at PBS, fish were hand fed several times daily to cessation of feeding, with automatic feeders being used on weekends. Fry were fed Biodiet® mash mixed with Murex® krill fines (krill fines were withdrawn on 16 June). Feed size was increased according to increasing fish size, following the manufacturer's advice.

A bulk sample of fish from each group was weighed and returned to the tanks on 27 May.

On 16 June all the fish were weighed and measured individually under light anesthetic (2-phenoxyethanol, 5 ppm solution), and returned to several similar tanks to avoid the possibility of overcrowding. After this distribution, Biodiet® became the exclusive feed.

On 4 and 5 July, fish were selected without known bias for tagging internally with passively induced transponder (PIT) tags (Prentice, 1990) and were distributed without choice to separate tanks according to the two collection sites and the feed and temperature regimes, as described in the paragraph below. The treatments had been randomly assigned to the tanks before the distribution of fish. To ensure that there were approximately 30 fish per tank (by experience an ideal number for these tanks), most were selected, including small fish. Fish were tagged by ventrolateral insertion of a PIT tag into the body cavity, using a sterilized 12 ga. hypodermic needle. However, fish under 2 grams were not selected if they appeared too frail to accept the hypodermic needle during tagging.

On the following day, 6 July, the experimental rationing of feed was started, based on the fish weights obtained. This was considered to be the first day of the experiment. The experimental design and treatments to be applied are shown in Table 1. The fish were fed by hand between 0800 and 1600 daily, to measured satiation ( $R_{max}$ ), or 80% ( $R_8$ ) or 60% ( $R_6$ ) of the  $R_{max}$  tank with the same temperature regime. The  $R_6$  fish were fed every other day to ensure a full access to feed for all the fish. Temperature was recorded daily before any required adjustment. Water supplied to the laboratory at regulated temperatures, and was mixed according to the protocol for that treatment. Adjustments were made as necessary to maintain limits of  $\pm 0.3^\circ\text{C}$ .

### Experimental protocol

Temperature regulation during the experiment is illustrated in Figure 1.

Temperature, °C

Fig  
and the  
26 April

Aft  
set daily  
Falls in  
high temp  
occurring  
regulated  
the cooli  
set at 10  
approxima  
source.  
2°C per d  
control 1  
The mean  
interval,  
Details o  
also pres

All

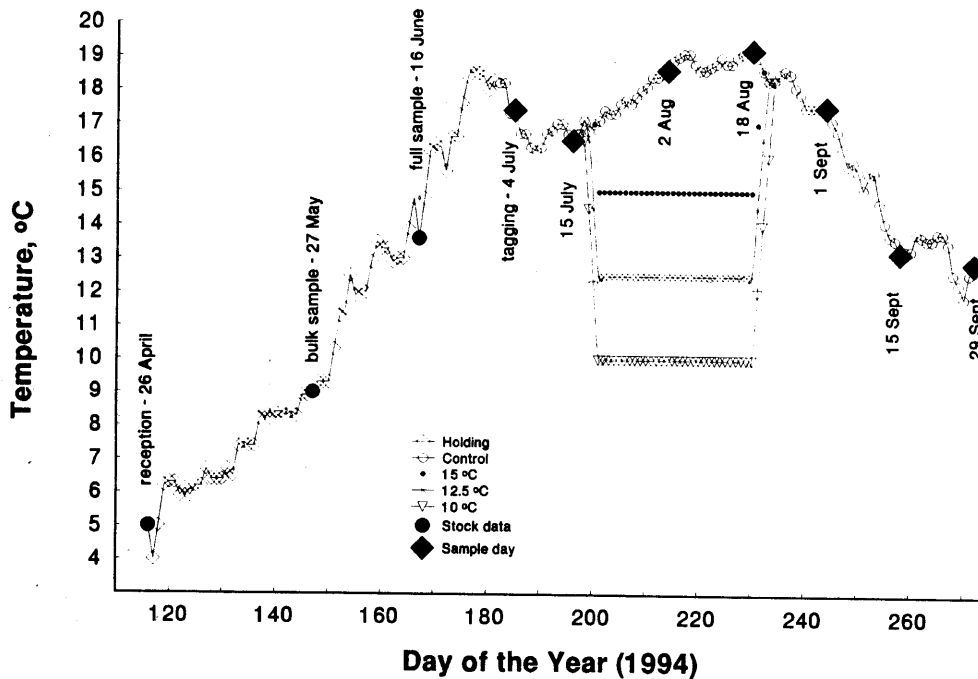


Figure 1. Protocol for daily setting of temperature level and the sampling schedule for chinook fry from receipt of fry on 26 April to termination of experiment on 29 September, 1994.

After tagging, the control temperature (ambient level) was set daily to follow the temperature recorded by DFO at Cheslatta Falls in 1992, from 15 July to 1 September. 1992 was a year of high temperature: this high level was chosen to set a naturally occurring upper limit to the design. The remaining tanks were regulated similarly, except that for a 30-day period (to produce the cooling effect of water release from the KDRF), levels were set at 10°C, 12.5°C and 15°C. These temperatures were to approximate the cooling anticipated by the change in water source. After this period (18 July to 18 August - allowing for 2°C per day acclimation), temperatures were restored to the control level. The experiment was terminated on 29 September. The mean of the daily temperature records over each sampling interval, for each group (tank), is presented in Table 2. Details of the sampling times and temperature adjustments are also presented graphically in Figure 1.

All the fish were sampled approximately every 15 days. After

the initial sampling of weight only (to avoid undue handling of fish at tagging) and until the end of the experiment, weight and length of each fish were obtained at each sampling.

During sampling, the fish were removed to an aerated pail, and each fish was then lightly anaesthetized in aerated water containing aerated 2-phenoxyethanol (5 ppm). Data were recorded electronically, using a laptop computer and software written by John Blackburn at PBS. For each fish, the PIT tag number was electronically identified and recorded, fork length was measured to 0.1 cm and the fish was immediately placed in an aerated bath of normal water at the appropriate temperature, which was placed on a self-taring balance, sensitive to 0.1 g. Weight was then automatically recorded. During this absence of fish, each empty tank was thoroughly cleaned and refilled.

For each fish, weight ( $W$ ) was recorded in grams, length ( $L$ ) in centimetres, condition factor was calculated as  $100 \cdot (W \cdot L^{-3})$  and specific growth was computed as  $100 \cdot (\ln W_n - \ln W_{n-1}) \cdot \Delta t^{-1}$ , where  $\Delta t$  = interval in days.

After each weighing, ration was recalculated on a dry weight basis according to measured water content of some of the same stock of fish. Fish dry weight was obtained from sampling a tank of residual fish held at ambient temperature, fed at  $R_0$  level (there was an insufficiency of stock to sample each tank). The samples were dried for 24h at 80°C. Feed dry weight was obtained at the same time. Proportional rations, based on dry weight of fish and feed, were derived from the feeding performance of the maximally fed fish at each of the appropriate temperatures: i.e., 80 and 60% of the ration was calculated according to the newly obtained biomass of these groups on reduced ration. Between samples, ration was adjusted daily according to a growth model provided by Bill McLean, Quinsam River Hatchery, Campbell River, BC (McLean, 1967).

## DATA PRESENTATION

A full series of data tables is presented. The data pertaining to measurements taken on the sampling days are for all fish alive at that time (Tables 3 through 6: each of these tables spans 2 pages).

The daily mortality record is shown in Table 7. Measured biomass is recorded in Table 8, with estimation of weight on those occasions when fish died between samples. Data for feed conversion and ration (Tables 9 and 10) were based on biomass, using adjusted values when necessary in order to provide data on a per-fish basis. Instances where it was necessary to estimate

the we  
indica  
asteri

exam  
group  
histol  
eviden

three  
are the  
Inspect  
ration  
fish wi  
amelior  
tempera  
evident

REPORT

Thanks an  
monitorin  
GACP; t  
collection  
data; to  
of the ran  
care of f  
and Debra

the weight of missing fish (because of mid-period mortality) are indicated in Table 8 by bold type, and in Tables 9 and 10 by an asterisk.

No infectious agents were found in any of the samples examined by the PBS Fish Health Unit. Two moribund fish from the group with excessive mortality (tank 501) were sectioned for histological examination. The resulting report indicated no evidence of significant pathology.

Figure 2 shows mean fish weight, one plot for each of the three ration levels and all to the same scale. The lines drawn are the average of the two sites for the four temperatures. Inspection of the three plots indicates a predominant effect of ration on growth. The decrease in growth in the maximally fed fish with temperature lowering (Fig. 2a), appeared to have been ameliorated by compensatory growth of these fish after temperature was restored to ambient. Such a response was not evident in the two groups on restricted ration (Fig 2, b and c).

## REFERENCES

- McLean, W.E. 1967. A rearing model for salmonids. M.Sc. Thesis, University of British Columbia, Vancouver, BC.
- NFCP, 1993. Pre-fertilization assessment: baseline fisheries studies of Reach 1 of the upper Nechako river, 1991. Nechako Fisheries Conservation Program, Data Report No. RM91-5. Prepared by Triton Consultants.
- Prentice, E.F. 1990. A new internal telemetry tag for fish and crustaceans. In: Sparks, A.K. (ed.) Marine Farming and Enhancement. Proceedings of the fifteenth US-Japan meeting on aquaculture, Kyoto, Japan, October 22-23, 1986. (NOAA Tech. Rep. NMFS: 85. National Marine Fisheries Service, Seattle, WA, USA).

## ACKNOWLEDGEMENTS

Thanks are due to Triton Consultants for providing fry from monitoring programs of the Nechako Fisheries Conservation Program (NFCP); to Ray Lauzier and John Blackburn for their help in fry collection and shipping; to Gail Faulkner for access to NFCP data; to Craig Penalagen for diligence in the daily computation of the ration model spreadsheet and for provision of thorough care of fish in the laboratory. Laurie Astrope, John Blackburn and Debra Tuck are also thanked for their timely assistance in

tagging and data monitoring. We thank Dominique Hervio for correcting the grammar of the résumé, and Gloria Bayntun for producing the final document. The Technical Committee of the NFCP provided criticism of the manuscript. Responsibility for the report remains with the senior author.

#### LIST OF TABLES

- Table 1. Experimental design (numbers designate tank identity).
- Table 2. Mean of daily temperature for each sample period (for sample period dates, see Figure 1).
- Table 3. Mean wet weight (g) of Nechako chinook fry by sample.
- Table 4. Mean length (cm) of Nechako chinook fry by sample.
- Table 5. Mean condition factor,  $100 \cdot (W \cdot L^{-3})$ , by sample.
- Table 6. Specific growth by sample period,  $100 \cdot (\ln W_n - \ln W_{n-1}) \cdot t^{-1}$  ( $W$  = weight of individual fish,  $t$  = time in days).
- Table 7. Mortality record for Nechako chinook, chronological order.
- Table 8. Total fish weight ( $W_1$ - $W_7$ ). **Bold** data were adjusted for mortality to give equal  $n$  ( $W_n$  = total fish body weight at each of the seven samples).
- Table 9. Feed conversion,  $100 \cdot (\text{grams gained} \cdot \text{grams fed}^{-1})$ , as percent dry weight gained per gram fed by sample period for Nechako chinook fry.
- Table 10. Daily ration,  $100 \cdot (\text{grams fed} \cdot \text{gram fish}^{-1} \cdot \text{day}^{-1})$ , as percent dry weight fed per gram fish per day by sample period for Nechako chinook fry.

#### LIST OF FIGURES

- Figure 1. Protocol for temperature level and sampling schedule of chinook fry from receipt of fry to termination of experiment in 1994.
- Figure 2. Figure 2 a, b and c. Weight of Nechako chinook fry for comparison at three ration levels, all three plots are to the same scale. Each line is an average of data from Irvine's Lodge and Diamond Island at each temperature.

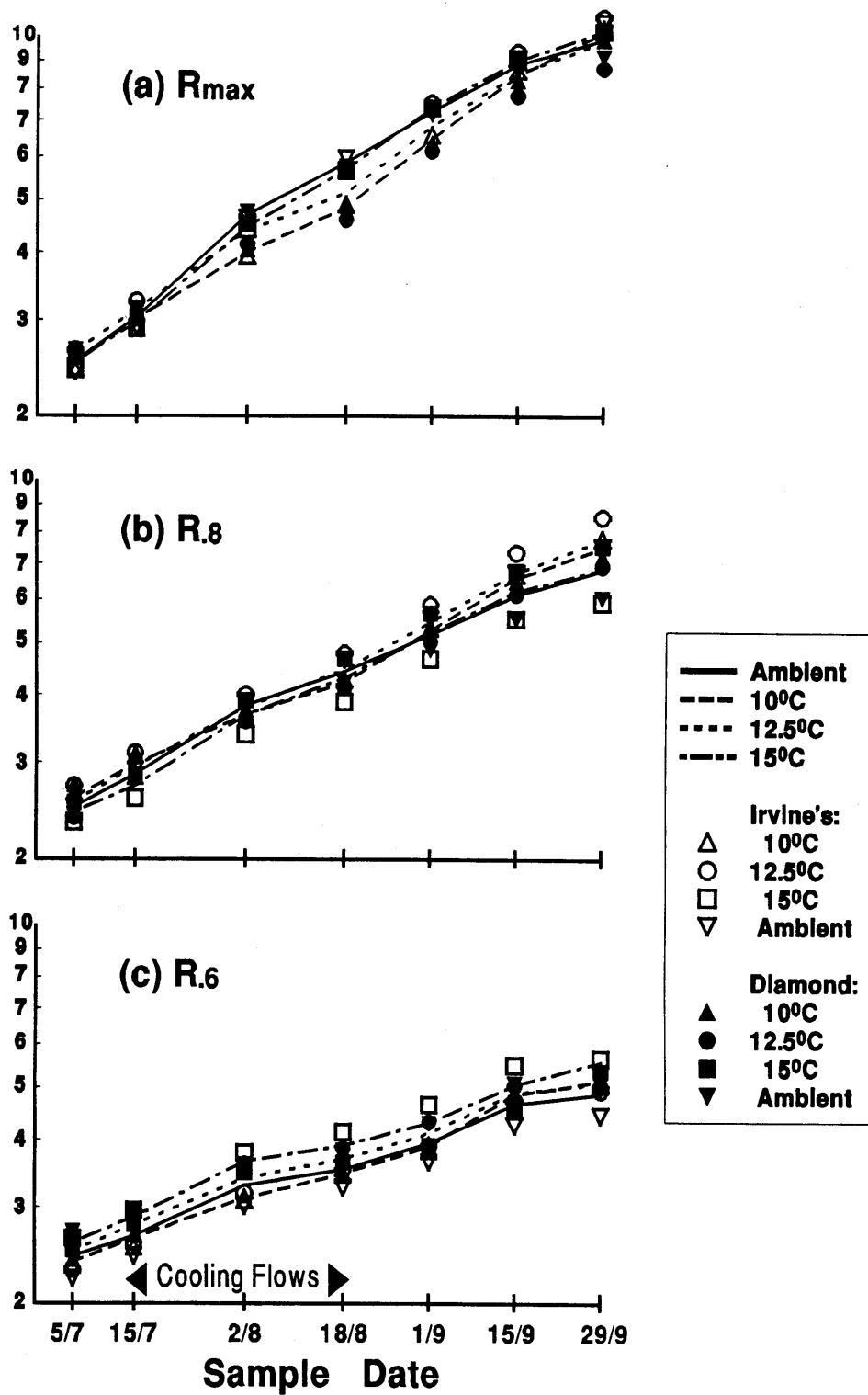


Figure 2 a, b and c. Weight of Nechako chinook fry for comparison at three ration levels, all three plots are to the same scale. Each line is an average of data from Irvine's Lodge and Diamond Island at each temperature.



**TABLE 1** EXPERIMENTAL DESIGN (Numbers designate tank identity)

Temperature Ration	source: Irvine's Lodge			source: Diamond Island		
	R <sub>max</sub>	R <sub>6</sub>	R <sub>8</sub>	R <sub>max</sub>	R <sub>6</sub>	R <sub>8</sub>
Ambient	405	403	506	302	304	401
10°C	305	502	408	402	505	410
12.5°C	301	508	507	504	509	503
15°C	406	407	303	409	501	404

**TABLE 2** MEAN OF DAILY TEMPERATURE BY SAMPLE PERIOD (for sample period dates, see Figure 1)

Temp	Ratn	Gp	Period	1	2	3	4	5	6
Ambt	Rmax	Irv		16.6	17.5	18.8	18.1	15.5	13.4
		Diam		16.8	17.6	18.9	18.1	15.5	13.6
	R.6	Irv		16.5	17.3	18.8	17.9	15.5	13.2
		Diam		16.5	17.5	18.9	18.1	15.5	13.4
	R.8	Irv		16.5	17.4	18.8	18.2	15.5	13.5
		Diam		16.6	17.2	18.2	17.4	15.4	13.4
10.0°C	Rmax	Irv		16.7	11.7	10.3	16.6	15.4	13.4
		Diam		16.6	11.7	10.2	16.5	15.5	13.3
	R.6	Irv		16.7	11.7	10.3	16.7	15.8	13.4
		Diam		16.6	11.5	10.3	16.6	15.5	13.3
	R.8	Irv		16.7	11.8	10.2	16.6	15.7	13.4
		Diam		16.6	11.6	10.1	16.5	15.4	13.3
12.5°C	Rmax	Irv		16.7	13.7	12.6	17.2	15.4	13.4
		Diam		16.8	14.0	12.6	17.2	15.6	13.5
	R.6	Irv		16.7	13.6	12.6	17.2	15.4	13.4
		Diam		16.6	13.6	12.4	17.2	15.4	13.3
	R.8	Irv		16.6	13.5	12.5	17.1	15.4	13.4
		Diam		16.7	13.6	12.4	17.1	15.5	13.3
15.0°C	Rmax	Irv		16.4	15.6	15.0	17.6	15.3	13.3
		Diam		16.6	15.6	15.1	17.5	15.4	13.4
	R.6	Irv		16.6	15.6	15.1	17.6	15.4	13.4
		Diam		16.8	15.7	15.1	17.6	15.4	13.4
	R.8	Irv		16.7	15.7	15.2	17.6	15.4	13.4
		Diam		16.7	15.5	15.0	17.5	15.4	13.3

**TABLE 3**

Temp

Amb<sup>c</sup>

10°C

R<sub>6</sub>R<sub>8</sub>

TABLE 3 MEAN WET WEIGHT (g) OF NECHAKO CHINOOK FRY BY SAMPLE

Temp	Rat <sup>n</sup>	Gp	Stat	4 Jul	15 Jul	2 Aug	18 Aug	1 Sep	15 Sep	29 Sep
Amb <sup>t</sup>	R <sub>max</sub>	Irv	n	29	29	28	28	28	28	28
			mean	2.4	2.9	4.6	6.0	7.4	9.1	10.7
			se	0.1	0.1	0.2	0.2	0.3	0.4	0.5
		Diam	n	30	30	30	30	30	30	30
			mean	2.6	3.2	4.7	5.7	7.2	8.6	9.2
			se	0.1	0.2	0.2	0.3	0.4	0.4	0.6
	R <sub>6</sub>	Irv	n	31	31	30	30	28	28	28
			mean	2.2	2.4	3.0	3.2	3.6	4.2	4.4
			se	0.1	0.1	0.1	0.2	0.2	0.2	0.2
		Diam	n	27	27	27	27	27	27	27
			mean	2.7	2.9	3.6	3.8	4.3	5.1	5.3
			se	0.1	0.1	0.1	0.2	0.2	0.2	0.2
	R <sub>8</sub>	Irv	n	27	27	27	26	26	26	26
			mean	2.5	2.9	3.9	4.7	5.5	6.7	7.5
			se	0.1	0.1	0.2	0.2	0.3	0.3	0.4
		Diam	n	29	29	28	28	28	26	25
			mean	2.5	2.8	3.8	4.2	4.8	5.5	6.0
			se	0.1	0.1	0.2	0.2	0.2	0.3	0.3
10°C	R <sub>max</sub>	Irv	n	29	29	28	28	28	28	28
			mean	2.4	2.9	3.9	4.9	6.6	8.7	10.4
			se	0.1	0.1	0.2	0.2	0.3	0.3	0.4
		Diam	n	30	30	30	30	30	30	30
			mean	2.5	3.1	4.0	4.8	6.4	8.3	10.0
			se	0.1	0.1	0.2	0.2	0.3	0.3	0.4
	R <sub>6</sub>	Irv	n	28	28	28	28	28	27	26
			mean	2.3	2.6	3.1	3.4	3.8	4.8	5.2
			se	0.1	0.1	0.1	0.2	0.2	0.2	0.3
		Diam	n	29	29	29	29	29	29	29
			mean	2.4	2.7	3.1	3.5	3.9	4.8	5.0
			se	0.1	0.1	0.1	0.2	0.2	0.2	0.3
	R <sub>8</sub>	Irv	n	28	28	27	27	27	27	27
			mean	2.4	2.8	3.6	4.3	5.3	6.7	7.8
			se	0.1	0.1	0.1	0.2	0.2	0.3	0.3
		Diam	n	28	28	28	28	28	28	28
			mean	2.7	3.1	3.7	4.2	5.2	6.5	7.2
			se	0.1	0.1	0.1	0.2	0.2	0.3	0.4

12.5°C	$R_{\max}$	Irv	n	27	27	26	26	26	26	1
			mean	2.6	3.2	4.6	5.7	7.5	9.4	
			se	0.1	0.1	0.2	0.2	0.3	0.4	
		Diam	n	28	28	28	28	28	27	
			mean	2.6	3.0	4.1	4.6	6.2	7.8	
			se	0.1	0.1	0.2	0.2	0.3	0.3	
	$R_{.6}$	Irv	n	29	29	29	29	29	29	
			mean	2.3	2.6	3.2	3.5	3.9	4.7	
			se	0.1	0.1	0.1	0.1	0.2	0.2	
		Diam	n	29	29	29	29	29	29	
			mean	2.6	3.0	3.6	3.8	4.3	5.0	
			se	0.1	0.1	0.2	0.2	0.2	0.3	
	$R_{.8}$	Irv	n	30	30	30	29	29	29	
			mean	2.7	3.1	4.0	4.8	5.9	7.3	
			se	0.1	0.1	0.2	0.2	0.2	0.2	
		Diam	n	29	29	29	29	29	29	
			mean	2.4	2.8	3.6	4.1	5.0	6.1	
			se	0.1	0.1	0.2	0.2	0.3	0.3	
15.0°C	$R_{\max}$	Irv	n	29	30	29	29	29	29	$R_{.6}$
			mean	2.4	2.9	4.4	5.6	7.4	9.0	
			se	0.1	0.1	0.2	0.3	0.3	0.3	
		Diam	n	29	29	29	29	29	29	
			mean	2.6	3.0	4.5	5.7	7.4	9.0	
			se	0.1	0.2	0.2	0.3	0.4	0.4	
	$R_{.6}$	Irv	n	25	27	26	26	26	26	
			mean	2.6	2.9	3.8	4.1	4.6	5.5	
			se	0.1	0.1	0.2	0.2	0.2	0.3	
		Diam	n	31	28	28	27	25	23	
			mean	2.5	2.8	3.5	3.7	3.9	4.5	
			se	0.1	0.1	0.2	0.2	0.2	0.2	
	$R_{.8}$	Irv	n	29	29	25	25	25	25	$R_{.8}$
			mean	2.3	2.6	3.4	3.9	4.7	5.5	
			se	0.1	0.1	0.2	0.2	0.2	0.3	
		Diam	n	30	30	29	29	29	29	
			mean	2.5	2.8	3.9	4.7	5.7	6.8	
			se	0.1	0.1	0.2	0.2	0.2	0.3	

TABLE 4 MEAN LENGTH (cm) OF NECHAKO CHINOOK FRY BY SAMPLE

Temp	Rat <sup>n</sup>	Gp	Stat	15 Jul	2 Aug	18 Aug	1 Sep	15 Sep	29 Sep
Amb <sup>c</sup>	R <sub>max</sub>	Irv	n	23	28	28	28	28	28
			mean	6.4	7.3	7.9	8.4	9.1	9.6
			se	0.1	0.1	0.1	0.1	0.1	0.1
		Diam	n	30	30	30	30	30	30
			mean	6.5	7.3	7.8	8.3	8.8	9.2
			se	0.1	0.1	0.1	0.1	0.1	0.2
	R <sub>.6</sub>	Irv	n	31	30	30	28	28	28
			mean	6.1	6.4	6.6	6.8	7.1	7.3
			se	0.1	0.1	0.1	0.1	0.1	0.1
		Diam	n	27	27	27	27	27	27
			mean	6.4	6.8	7.0	7.1	7.4	7.7
			se	0.1	0.1	0.1	0.1	0.1	0.1
	R <sub>.8</sub>	Irv	n	27	27	26	26	26	26
			mean	6.3	6.9	7.3	7.7	8.1	8.6
			se	0.1	0.1	0.1	0.1	0.1	0.1
		Diam	n	29	28	28	28	26	25
			mean	6.3	6.9	7.1	7.4	7.7	8.0
			se	0.1	0.1	0.1	0.1	0.1	0.1
10.0°C	R <sub>max</sub>	Irv	n	29	28	28	28	28	28
			mean	6.4	7.0	7.6	8.2	8.8	9.5
			se	0.1	0.1	0.1	0.1	0.1	0.1
		Diam	n	30	30	30	30	30	30
			mean	6.5	7.1	7.5	8.1	8.8	9.4
			se	0.1	0.1	0.1	0.1	0.1	0.1
	R <sub>.6</sub>	Irv	n	28	28	28	28	27	26
			mean	6.2	6.5	6.8	7.0	7.3	7.6
			se	0.1	0.1	0.1	0.1	0.1	0.1
		Diam	n	29	29	29	29	29	29
			mean	6.3	6.6	6.8	7.0	7.3	7.6
			se	0.1	0.1	0.1	0.1	0.1	0.1
	R <sub>.8</sub>	Irv	n	28	27	27	27	27	27
			mean	6.3	6.8	7.3	7.6	8.2	8.7
			se	0.1	0.1	0.1	0.1	0.1	0.1
		Diam	n	28	28	28	28	28	28
			mean	6.5	6.9	7.3	7.7	8.1	8.5
			se	0.1	0.1	0.1	0.1	0.1	0.1

12.5°C	$R_{\max}$	Irv	n	27	26	26	26	26	26
			mean	6.4	7.3	7.9	8.5	9.0	9.6
			se	0.1	0.1	0.1	0.1	0.1	0.1
		Diam	n	28	28	28	28	27	27
			mean	6.5	7.1	7.5	8.0	8.6	9.0
			se	0.1	0.1	0.1	0.1	0.1	0.1
	$R_{.6}$	Irv	n	29	29	29	29	29	29
			mean	6.1	6.5	6.8	7.0	7.2	7.5
			se	0.1	0.1	0.1	0.1	0.1	0.1
		Diam	n	29	29	29	29	29	26
			mean	6.4	6.8	7.1	7.2	7.5	7.7
			se	0.1	0.1	0.1	0.1	0.1	0.1
	$R_{.8}$	Irv	n	30	29	29	29	29	29
			mean	6.5	7.0	7.5	7.9	8.4	8.9
			se	0.1	0.1	0.1	0.1	0.1	0.1
		Diam	n	29	29	29	29	29	27
			mean	6.3	6.8	7.2	7.5	7.9	8.3
			se	0.1	0.1	0.1	0.1	0.1	0.1

15.0°C	$R_{\max}$	Irv	n	30	29	29	29	29	29
			mean	6.4	7.2	7.8	8.4	9.0	9.5
			se	0.1	0.1	0.1	0.1	0.1	0.1
		Diam	n	29	29	29	29	29	29
			mean	6.5	7.3	7.9	8.5	9.0	9.5
			se	0.1	0.1	0.1	0.1	0.1	0.1
	$R_{.6}$	Irv	n	27	26	26	26	26	26
			mean	6.4	6.9	7.1	7.3	7.6	7.9
			se	0.1	0.1	0.1	0.1	0.1	0.1
		Diam	n	30	28	27	25	23	13
			mean	6.3	6.7	6.9	7.0	7.2	7.7
			se	0.1	0.1	0.1	0.1	0.1	0.1
	$R_{.8}$	Irv	n	29	25	25	25	25	23
			mean	6.2	6.7	7.0	7.3	7.6	8.0
			se	0.1	0.1	0.1	0.1	0.1	0.1
		Diam	n	30	29	29	29	29	29
			mean	6.3	6.9	7.4	7.8	8.2	8.6
			se	0.1	0.1	0.1	0.1	0.1	0.1

TABLE

Tem

Amb<sup>t</sup>

10.0°

TABLE 5 MEAN CONDITION FACTOR BY SAMPLE PERIOD,  $100 \cdot (W \cdot L^{-3})$ 

Temp	Rat <sup>n</sup>	Gp	Stat	15 Jul	2 Aug	18 Aug	1 Sept	15 Sep	29 Sep
Amb <sup>t</sup>	R <sub>max</sub>	Irv	n	23	28	28	28	28	28
			mean	1.110	1.157	1.186	1.218	1.215	1.173
			se	0.012	0.008	0.009	0.010	0.010	0.010
		Diam	n	30	30	30	30	30	30
			mean	1.128	1.172	1.185	1.207	1.222	1.130
			se	0.012	0.010	0.012	0.010	0.010	0.014
	R <sub>6</sub>	Irv	n	31	30	30	28	28	28
			mean	1.049	1.103	1.103	1.140	1.182	1.112
			se	0.015	0.018	0.015	0.012	0.011	0.011
		Diam	n	27	27	27	27	27	27
			mean	1.082	1.139	1.116	1.161	1.225	1.127
			se	0.012	0.012	0.012	0.010	0.011	0.011
	R <sub>8</sub>	Irv	n	27	27	26	26	26	26
			mean	1.117	1.143	1.171	1.194	1.228	1.169
			se	0.017	0.014	0.011	0.013	0.013	0.011
		Diam	n	29	28	28	28	26	25
			mean	1.121	1.147	1.137	1.186	1.190	1.165
			se	0.014	0.009	0.009	0.010	0.009	0.009
10.0°C	R <sub>max</sub>	Irv	n	29	28	28	28	28	28
			mean	1.092	1.121	1.102	1.181	1.231	1.192
			se	0.014	0.012	0.013	0.014	0.010	0.010
		Diam	n	30	30	30	30	30	30
			mean	1.136	1.118	1.091	1.162	1.200	1.197
			se	0.011	0.010	0.011	0.012	0.009	0.012
	R <sub>6</sub>	Irv	n	28	28	28	28	27	26
			mean	1.048	1.069	1.065	1.084	1.218	1.139
			se	0.016	0.013	0.011	0.014	0.015	0.015
		Diam	n	29	29	29	29	29	29
			mean	1.065	1.078	1.061	1.103	1.223	1.132
			se	0.012	0.012	0.009	0.010	0.015	0.015
	R <sub>8</sub>	Irv	n	28	27	27	27	27	27
			mean	1.134	1.119	1.093	1.191	1.211	1.177
			se	0.019	0.009	0.011	0.015	0.011	0.013
		Diam	n	28	28	28	28	28	28
			mean	1.103	1.108	1.063	1.143	1.208	1.142
			se	0.012	0.010	0.013	0.007	0.010	0.010

12.5°C	$R_{\max}$	Irv	n	27	26	26	26	26	26
			mean	1.193	1.164	1.160	1.214	1.242	1.213
			se	0.017	0.011	0.011	0.013	0.014	0.014
		Diam	n	28	28	28	28	27	27
			mean	1.085	1.120	1.076	1.168	1.198	1.163
			se	0.014	0.009	0.009	0.015	0.012	0.012
		$R_6$	Irv	n	29	29	29	29	29
			mean	1.096	1.120	1.098	1.123	1.235	1.163
			se	0.020	0.009	0.009	0.010	0.011	0.011
		Diam	n	29	29	29	29	29	26
			mean	1.092	1.125	1.062	1.120	1.176	1.105
			se	0.013	0.013	0.011	0.012	0.014	0.021
		$R_8$	Irv	n	30	29	29	29	29
			mean	1.128	1.135	1.116	1.166	1.221	1.197
			se	0.018	0.017	0.011	0.011	0.012	0.011
15.0°C	$R_{\max}$	Irv	n	30	29	29	29	29	29
			mean	1.103	1.152	1.147	1.217	1.229	1.188
			se	0.017	0.011	0.009	0.009	0.009	0.011
		Diam	n	29	29	29	29	29	29
			mean	1.104	1.117	1.139	1.182	1.199	1.169
			se	0.013	0.010	0.010	0.008	0.009	0.010
		$R_6$	Irv	n	27	26	26	26	26
			mean	1.124	1.132	1.123	1.151	1.211	1.130
			se	0.017	0.009	0.010	0.011	0.018	0.014
		Diam	n	28	28	27	25	23	13
			mean	1.104	1.146	1.097	1.124	1.179	1.151
			se	0.012	0.010	0.011	0.012	0.017	0.018
		$R_8$	Irv	n	29	25	25	25	23
			mean	1.074	1.104	1.108	1.165	1.222	1.137
			se	0.017	0.014	0.011	0.014	0.021	0.019
		Diam	n	30	29	29	29	29	29
			mean	1.097	1.147	1.144	1.187	1.232	1.162
			se	0.016	0.010	0.011	0.011	0.009	0.010

TABLE 6

Temp	Ra
Ambt	Ra

R.0

R.8

10.0 Rmax

R.6

R.8

**TABLE 6** SPECIFIC GROWTH BY SAMPLE PERIOD,  $100 \cdot (\ln W_n - \ln W_{n-1}) \cdot \text{days}^{-1}$ 

Temp	Ratn	Gp	Stat	Period	1	2	3	4	5	6
Ambt	Rmax	Irv	n	29	28	28	28	28	28	28
			mean	1.89	2.52	1.58	1.55	1.52	1.09	
			se	0.11	0.07	0.06	0.07	0.04	0.04	
		Diam	n	30	30	30	30	30	30	30
			mean	1.78	2.29	1.13	1.62	1.35	0.31	
			se	0.12	0.08	0.08	0.07	0.08	0.11	
		R.6	Irv	n	31	30	30	28	28	28
			mean	0.89	1.08	0.43	0.72	1.12	0.32	
			se	0.12	0.09	0.08	0.06	0.07	0.06	
		Diam	n	27	27	27	27	27	27	27
			mean	0.80	1.15	0.39	0.82	1.21	0.28	
			se	0.08	0.07	0.05	0.06	0.06	0.07	
	R.8	Irv	n	27	27	26	26	26	26	26
			mean	1.28	1.59	1.05	1.22	1.41	0.78	
			se	0.12	0.10	0.06	0.05	0.07	0.06	
		Diam	n	29	28	28	28	26	25	
			mean	1.34	1.61	0.63	1.01	0.95	0.63	
			se	0.10	0.08	0.08	0.07	0.09	0.08	
10.0	Rmax	Irv	n	29	28	28	28	28	28	28
			mean	1.71	1.72	1.35	2.11	1.98	1.31	
			se	0.12	0.06	0.05	0.08	0.05	0.05	
		Diam	n	30	30	30	30	30	29	
			mean	2.14	1.42	1.03	2.07	1.91	1.30	
			se	0.10	0.07	0.07	0.07	0.06	0.07	
		R.6	Irv	n	26	26	28	28	27	26
			mean	0.83	0.92	0.66	0.70	1.60	0.51	
			se	0.16	0.08	0.06	0.12	0.07	0.10	
		Diam	n	29	29	29	29	29	29	29
			mean	0.93	0.91	0.62	0.91	1.43	0.23	
			se	0.09	0.08	0.07	0.06	0.09	0.11	
	R.8	Irv	n	28	27	27	27	27	27	27
			mean	1.46	1.25	1.05	1.56	1.65	1.10	
			se	0.13	0.04	0.05	0.07	0.06	0.06	
		Diam	n	28	28	28	28	28	28	28
			mean	1.32	1.02	0.60	1.63	1.57	0.69	
			se	0.09	0.07	0.09	0.08	0.07	0.10	



Tank	Temp	Ref"	Op	M1	M2A1	M20U	M3A	M30U	M4A	M40U	M5A	M50U	M6A	M60U	M7
405	Ambt														
302		R <sub>av</sub>	1rv	69.6	84.2	84.2	122.0	129.6	166.0	166.8	206.9	206.9	269.8	269.8	398.7
403			Diam	78.9	94.6	94.6	142.5	142.5	172.4	172.4	216.2	216.2	269.1	269.1	376.9
		R <sub>s</sub>	1rv	68.6	75.2	75.2	122.0	122.0	166.0	166.0	206.9	206.9	269.1	269.1	376.9

## Notes

SD indicates Sampling Day.

Mortalities are listed in chronological order. For identity treatment, see experimental design (Table 1).

ty 9

**TABLE 8 TOTAL FISH WEIGHT (W1 W7). BOLD DATA WERE ADJUSTED FOR MORTALITY TO GIVE EQUAL n**

Tank	Temp	Rat <sup>n</sup>	Gp	W1	W2in	W2out	W3in	W3out	W4in	W4out	W5in	W5out	W6in	W6out	Wt7
405	Ambt	R <sub>max</sub>	Irv	69.6	84.2	84.2	<b>132.0</b>	129.6	166.8	166.8	206.9	206.9	255.8	255.8	298.7
302			Diam	78.9	94.6	94.6	142.5	142.5	172.4	172.4	215.2	215.2	259.1	259.1	275.2
403		R <sub>6</sub>	Irv	68.6	75.2	75.2	<b>92.3</b>	90.4	97.4	<b>93.7</b>	101.5	101.5	118.7	118.7	123.9
304			Diam	72.5	78.5	78.5	96.8	96.8	103.1	103.1	115.5	115.5	136.9	136.9	142.6
506		R <sub>8</sub>	Irv	69.5	78.2	78.2	104.4	104.4	<b>122.4</b>	120.9	143.4	143.4	174.9	174.9	195.6
401	10°C		Diam	71.6	81.7	81.7	<b>109.1</b>	105.9	117.5	117.5	135.4	135.4	153.8	138.3	<b>156.0</b>
305		R <sub>max</sub>	Irv	70.1	83.5	<b>81.2</b>	110.4	110.4	137.3	137.3	184.2	184.2	242.4	242.4	291.3
402			Diam	76.4	94.2	94.2	121.1	121.1	143.3	143.3	191.2	191.2	248.9	248.9	300.2
502		R <sub>6</sub>	Irv	65.4	72.2	72.2	86.1	86.1	96.2	96.2	106.7	106.7	130.7	130.7	135.0
505			Diam	69.6	77.2	77.2	91.0	91.0	100.5	100.5	114.3	114.3	140.2	140.2	146.0
408	12.5°	R <sub>8</sub>	Irv	68.2	79.3	79.3	<b>98.7</b>	97.4	115.4	115.4	143.5	143.5	180.2	180.2	210.4
410			Diam	76.5	87.3	87.3	104.9	104.9	116.3	116.3	145.5	145.5	181.7	181.7	202.1
301		R <sub>max</sub>	Irv	70.9	87.4	87.4	<b>121.7</b>	120.8	148.9	148.9	195.7	195.7	243.4	243.4	283.4
504			Diam	73.1	81.4	81.4	115.9	115.9	128.5	128.5	172.3	172.3	210.8	209.7	236.0
508		R <sub>6</sub>	Irv	67.6	74.6	74.6	92.1	92.1	101.7	101.7	112.8	112.8	136.8	136.8	142.6
509	15°C		Diam	76.7	85.8	85.8	104.3	104.3	111.5	111.5	125.0	125.0	145.8	145.8	149.0
507		R <sub>8</sub>	Irv	81.3	93.6	93.6	120.1	<b>119.0</b>	138.4	138.4	170.2	170.2	212.8	212.8	247.6
503			Diam	68.6	75.5	75.5	103.6	103.6	119.6	119.6	145.4	145.4	177.7	162.3	186.8
406		R <sub>max</sub>	Irv	<b>73.8</b>	86.9	86.9	<b>134.6</b>	128.0	163.8	163.8	214.2	214.2	262.0	262.0	297.2
409			Diam	74.3	88.3	88.3	130.7	130.7	165.1	165.1	213.8	213.8	261.9	261.9	296.6
407		R <sub>6</sub>	Irv	<b>70.3</b>	79.6	<b>78.6</b>	98.3	98.3	107.5	107.5	120.6	120.6	142.4	142.4	146.6
501			Diam	<b>75.0</b>	<b>82.6</b>	77.9	93.6	<b>91.2</b>	<b>96.9</b>	<b>94.5</b>	<b>100.1</b>	93.7	104.5	<b>99.4</b>	69.4
303		R <sub>8</sub>	Irv	67.5	74.9	<b>66.4</b>	<b>86.1</b>	84.5	96.9	96.9	116.4	116.4	138.3	138.3	<b>147.6</b>
404			Diam	75.9	85.4	85.4	<b>115.1</b>	113.5	135.3	135.3	164.5	164.5	196.9	196.9	219.0

**Note** -in and -out in column heads refer to weight total used in conversion calculations at the same sample time. In is the value ending of one period and out that starting the next.

TABLE 9

FEED CONVERSION,  $100 \cdot (\text{grams gained} \cdot \text{grams fed}^{-1})$ , AS PERCENT DRY WEIGHT GAINED PER GRAM FED BY SAMPLE PERIOD FOR NECHAKO CHINOOK FRY

Temp	Ratn	Gp	Period 1	2	3	4	5	6
Ambient	Rmax	Irv	16.07	22.11	19.40	21.68	24.62	21.09
		Diam	15.84	21.31	16.14	21.25	21.07	9.27
	R.6	Irv	18.20	18.67	10.37	13.01	26.61	9.72
		Diam	16.54	18.14	8.86	18.77	29.50	9.05
	R.8	Irv	15.43	19.00	16.65	21.03	27.07	19.15
		Diam	19.53	18.39*	9.70	17.37	18.04*	15.49*
10.0°C	Rmax	Irv	14.41	20.33	20.81	22.40	26.57	21.96
		Diam	17.15	19.71	19.50	23.44	25.62	21.65
	R.6	Irv	15.78	19.95	21.97	14.84	30.11	5.90
		Diam	16.93	19.71	19.60	17.87	30.31	7.44
	R.8	Irv	19.94	20.01	22.08	22.75	26.82	21.29
		Diam	18.68	17.82	13.86	23.37	28.00	14.99
12.5°C	Rmax	Irv	17.34	19.22	19.51	22.39	24.01	20.87
		Diam	10.27	22.88	12.58	23.10	20.94	15.25
	R.6	Irv	14.05	23.10	19.37	14.79	30.11	9.45
		Diam	22.43	20.28	13.10	16.56	23.36	4.92*
	R.8	Irv	22.53	20.50	19.86	21.87	26.70	24.67
		Diam	13.07	27.36	20.44	21.01	23.98	17.37*
15°C	Rmax	Irv	13.71*	21.25	20.94	23.05	24.11	18.35
		Diam	14.55	21.55	19.79	21.98	23.82	18.09
	R.6	Irv	23.56*	19.32	14.08	17.29	27.84	6.66
		Diam	16.28*	16.13*	9.28*	11.80*	17.90*	N/A
	R.8	Irv	13.65	17.53*	14.76	19.68	23.10	10.98*
		Diam	17.18	20.73	19.27	20.85	24.25	17.01

## Notes

- \* best estimates, made for fish losses between samplings.  
 N/A excessive fish loss in this period, data not computed.

TABLE 10

DAILY RATION,  $100 \cdot (\text{grams fed} \cdot \text{gram fish}^{-1} \cdot \text{day}^{-1})$ , AS PERCENT DRY WEIGHT FED PER GRAM FISH PER DAY BY SAMPLE PERIOD FOR NECHAKO CHINOOK FRY

Temp	Ratn	Gp	Period 1	2	3	4	5	6
Ambt	Rmax	Irv	11.87	11.39	8.15	7.11	6.17	5.25
		Diam	10.43	10.76	7.39	7.47	6.30	4.65
	R.6	Irv	5.05	6.11	4.50	4.39	4.21	3.15
		Diam	4.81	6.43	4.45	4.32	4.12	3.21
	R.8	Irv	6.95	8.48	5.98	5.81	5.25	4.17
		Diam	6.76	8.71*	6.70	5.84	5.05*	4.04*
10.0°C	Rmax	Irv	12.16	8.43	6.56	9.40	7.40	5.98
		Diam	12.23	7.10	5.40	8.82	7.37	6.19
	R.6	Irv	5.70	4.91	3.16	4.99	4.82	3.92
		Diam	5.57	4.64	3.17	5.15	4.82	3.89
	R.8	Irv	7.57	6.09	4.81	6.86	6.08	5.20
		Diam	7.07	5.73	4.65	6.86	5.68	5.07
12.5°C	Rmax	Irv	10.99	9.61	6.71	8.74	6.50	5.22
		Diam	9.52	8.63	5.13	9.10	6.89	5.53
	R.6	Irv	5.05	5.08	3.20	5.01	4.58	3.14
		Diam	4.55	5.36	3.18	4.93	4.71	3.15*
	R.8	Irv	5.69	6.77	4.76	6.77	5.98	4.39
		Diam	6.67	6.45	4.40	6.65	5.98	4.94*
15.0°C	Rmax	Irv	11.93*	11.53	7.38	8.34	5.98	4.91
		Diam	11.88	10.18	7.39	8.42	6.09	4.91
	R.6	Irv	4.99*	6.45	3.97	4.75	4.27	3.12
		Diam	5.39*	6.33*	4.08*	4.88*	4.35*	N/A
	R.8	Irv	7.63	8.26	5.80	6.67	5.34	4.41*
		Diam	6.87	8.03	5.70	6.71	5.30	4.47

## Notes

\* best estimates, made for fish losses between samplings.  
 N/A excessive loss in this period, data not computed.